



Internal Medicine in Europe

Clare Higgins

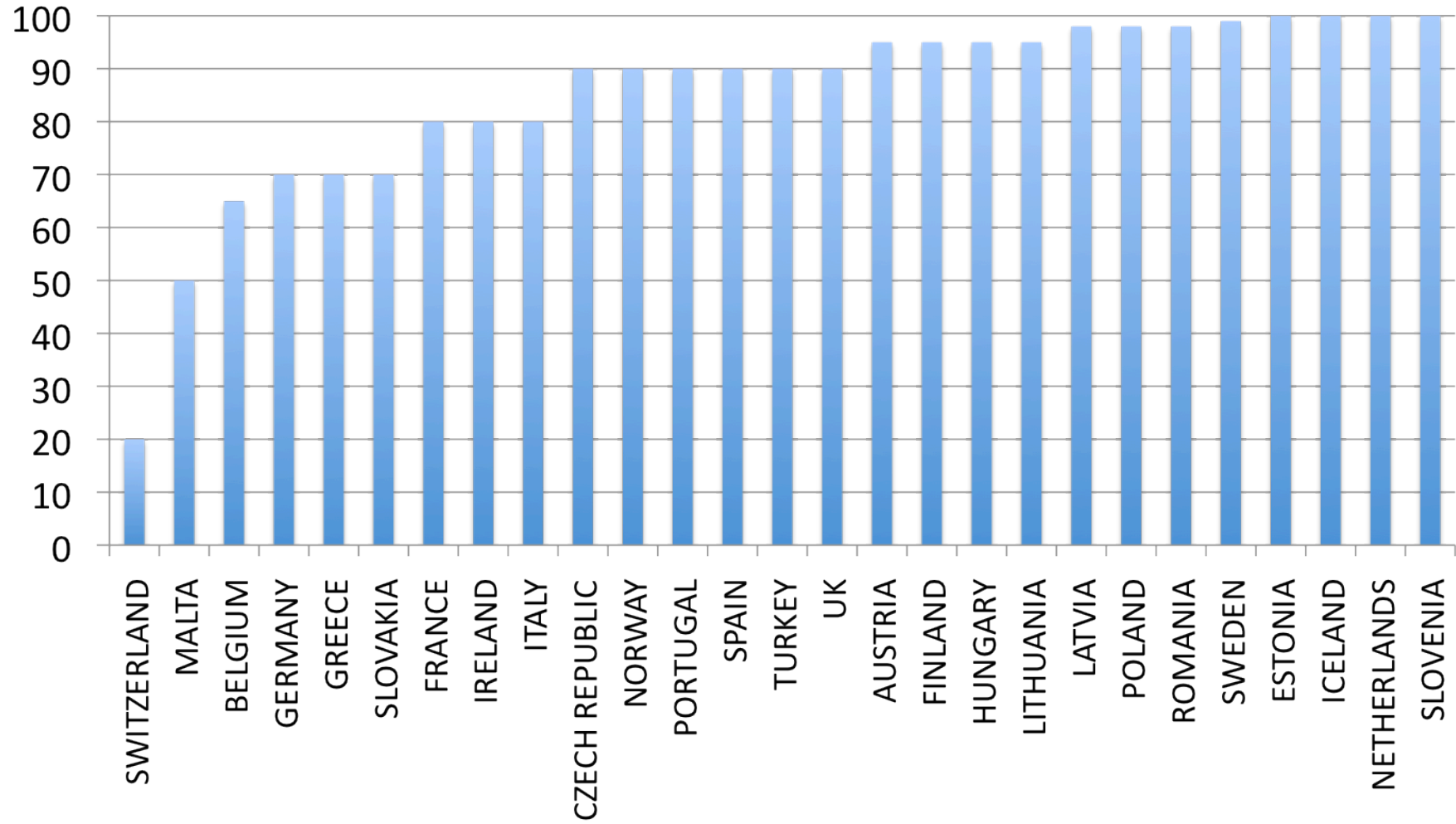
European Federation of Internal
Medicine

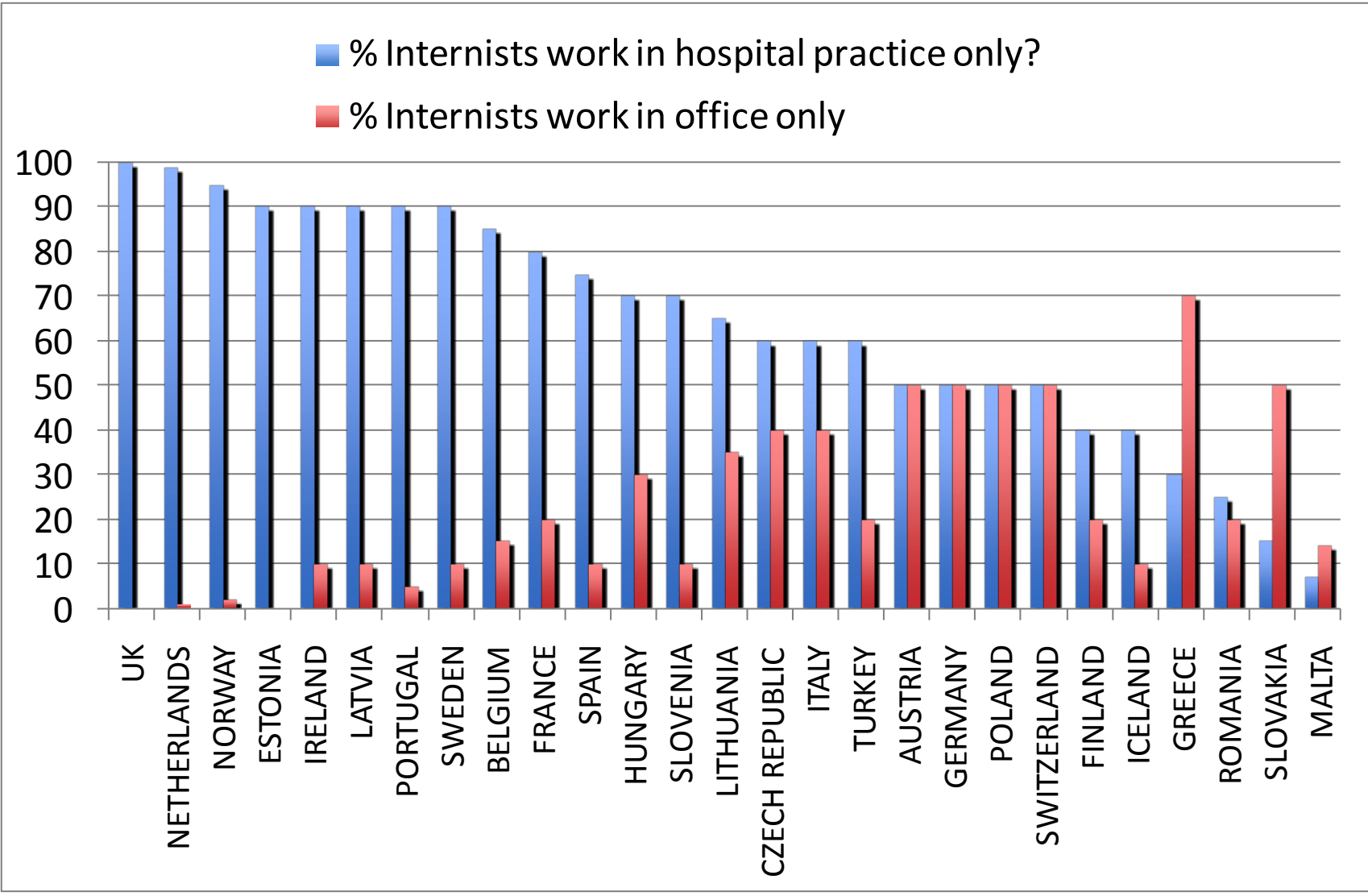
EFIM Survey 2008

Response =
26 National
Societies



2. What percentage of your hospitals belong to the national health system?

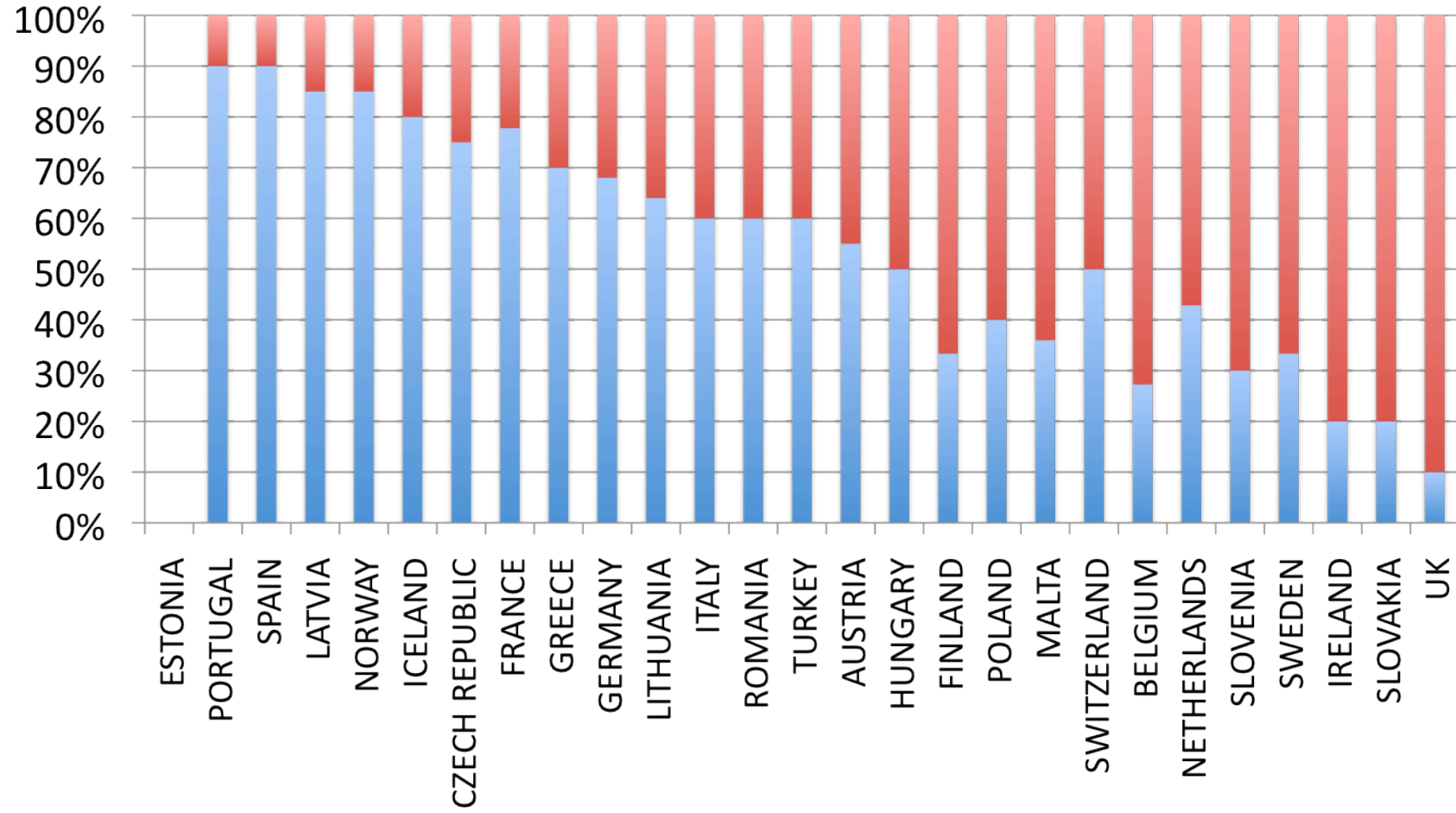




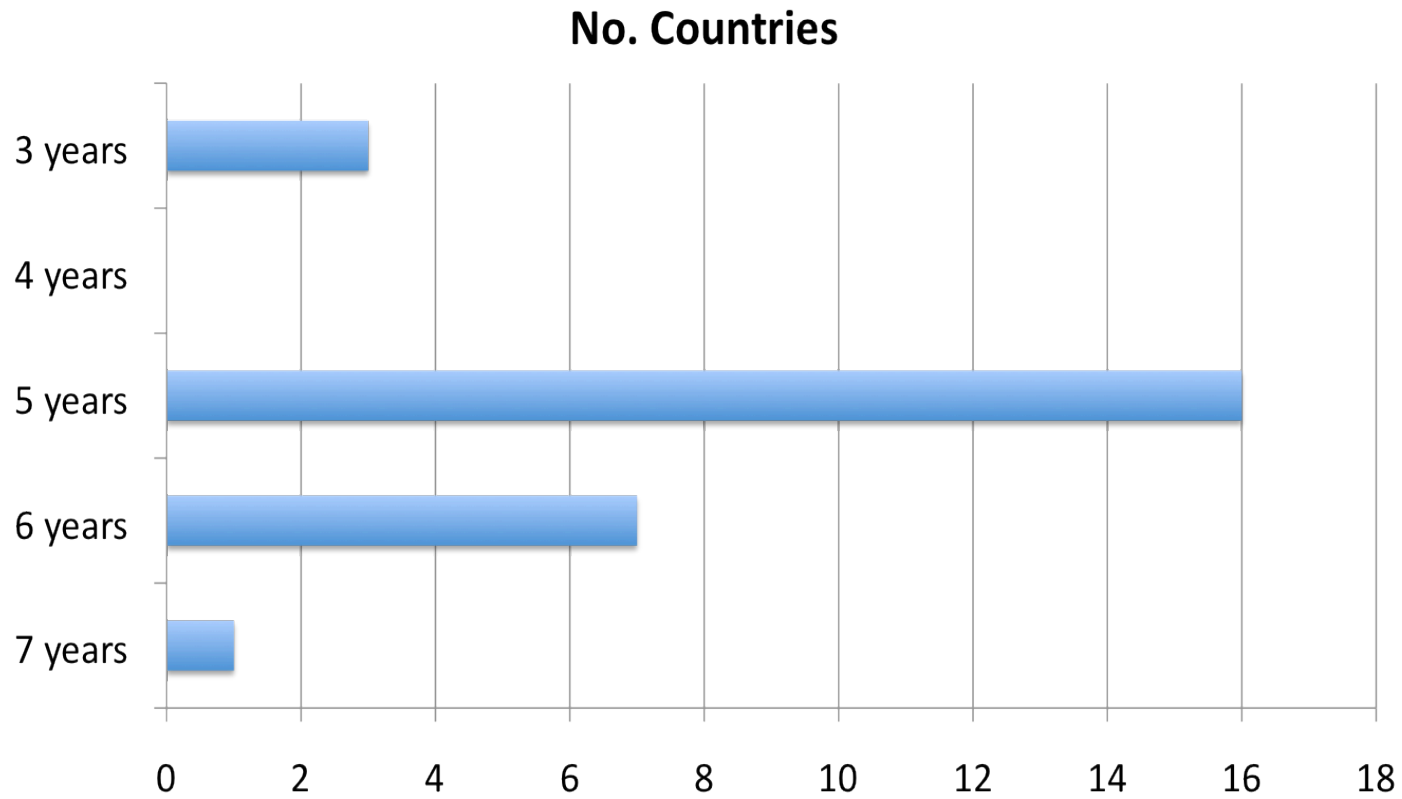
Organisation of IM

- The majority of Hospitals in most (75%) countries are within the national health service
- Most Internists operate primarily within the hospital rather than office-based practice

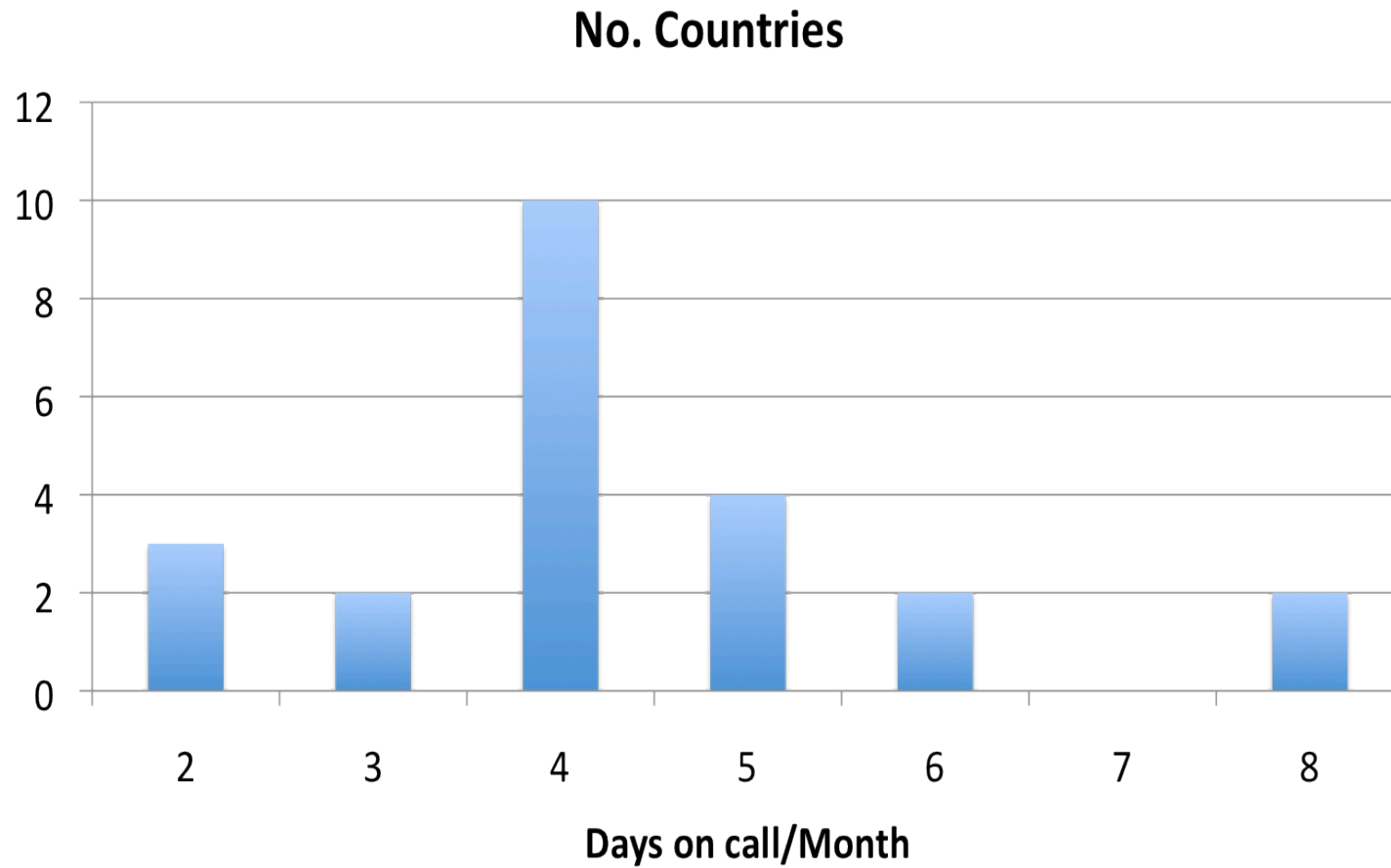
■ Internal Medicine alone ■ Internal Medicine + Specialty



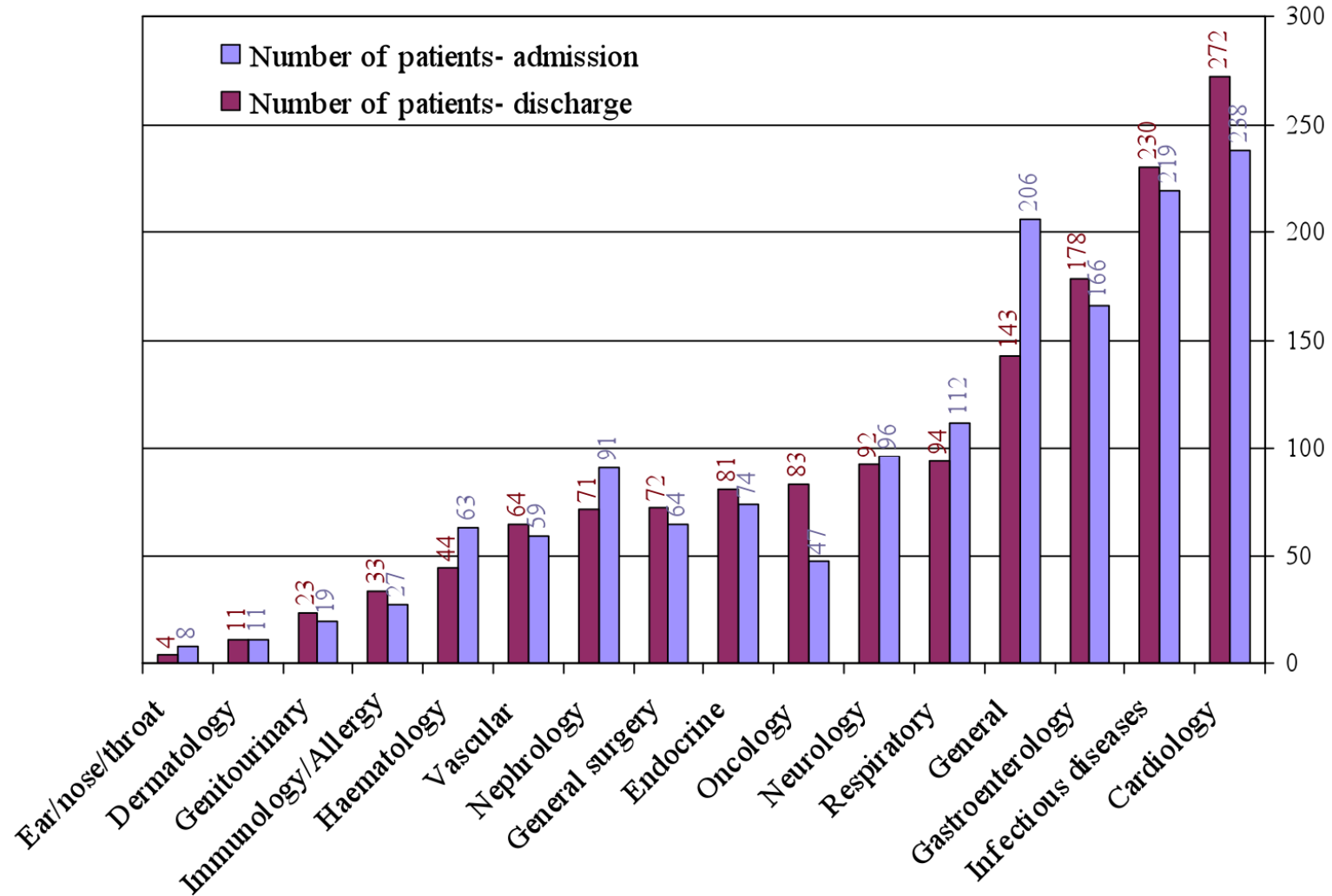
Duration of Training in IM



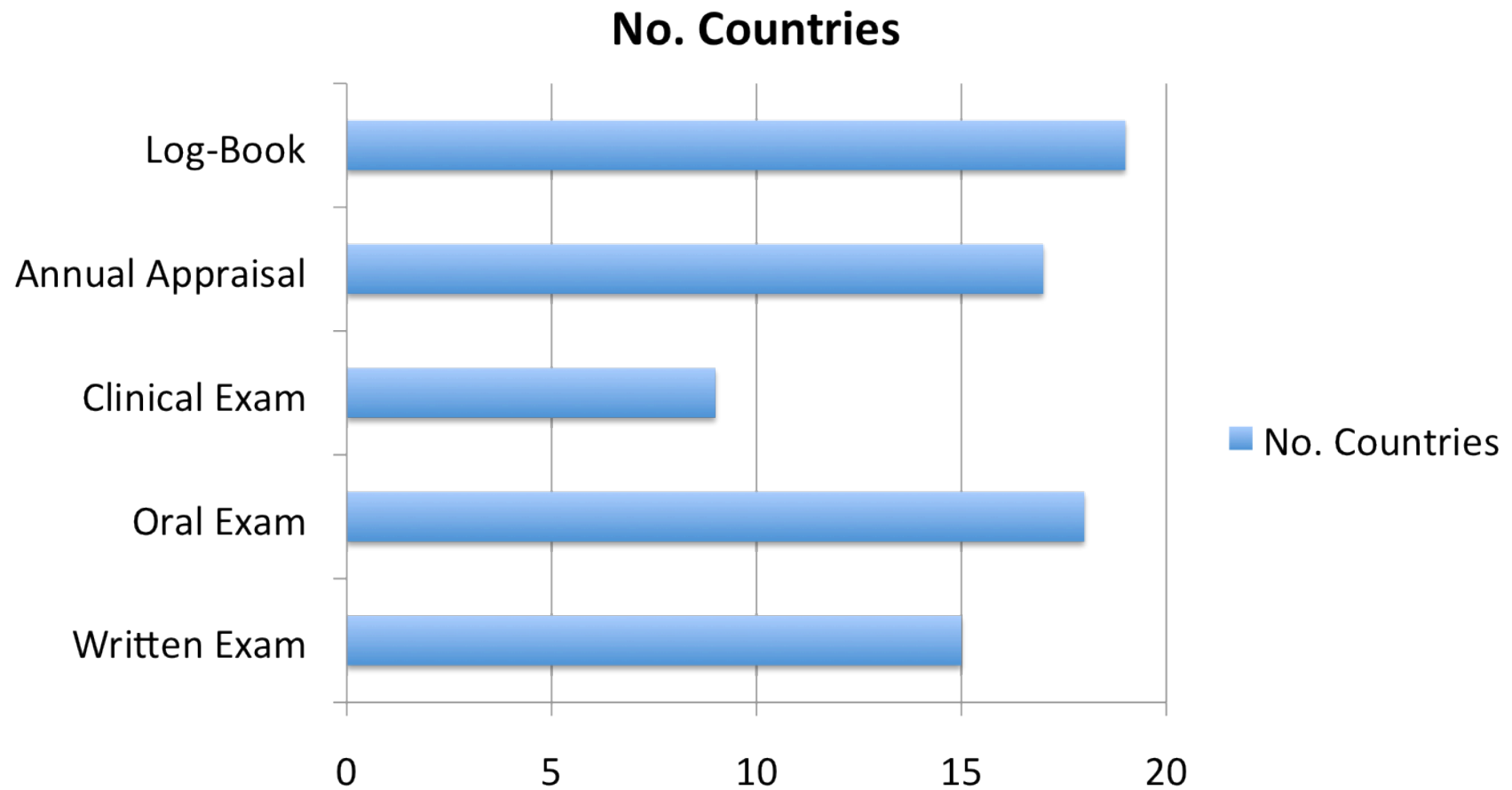
Emergency Medical Duties



Young Internists Survey of Medical Admissions (CDIME)



Assessment of Training in IM



Internal Medicine in Europe



- Most Internists practice IM with a sub-speciality
- Most Internists are based in hospital where they are responsible for emergency medical admissions
- The training programmes in IM are broadly similar
- Differences in IM between countries are more to do with the organisation of Health Service delivery than with the specialty itself
- Internal Medicine is becoming a shortage specialty in some European countries

Internal Medicine in your country

- Training Emergency medicine
- Hospitals-Where? Exams ? type
- Duration-how long Practical procedures
- Activities
- State hospitals
- Research opportunities
- Subspecialties and internal medicine.
- Who looks after elderly patients

To discuss-

- What is the best aspect of your training?
- What is the worst aspect of your training?
- What would you like to have in your training that you do not have at the moment.